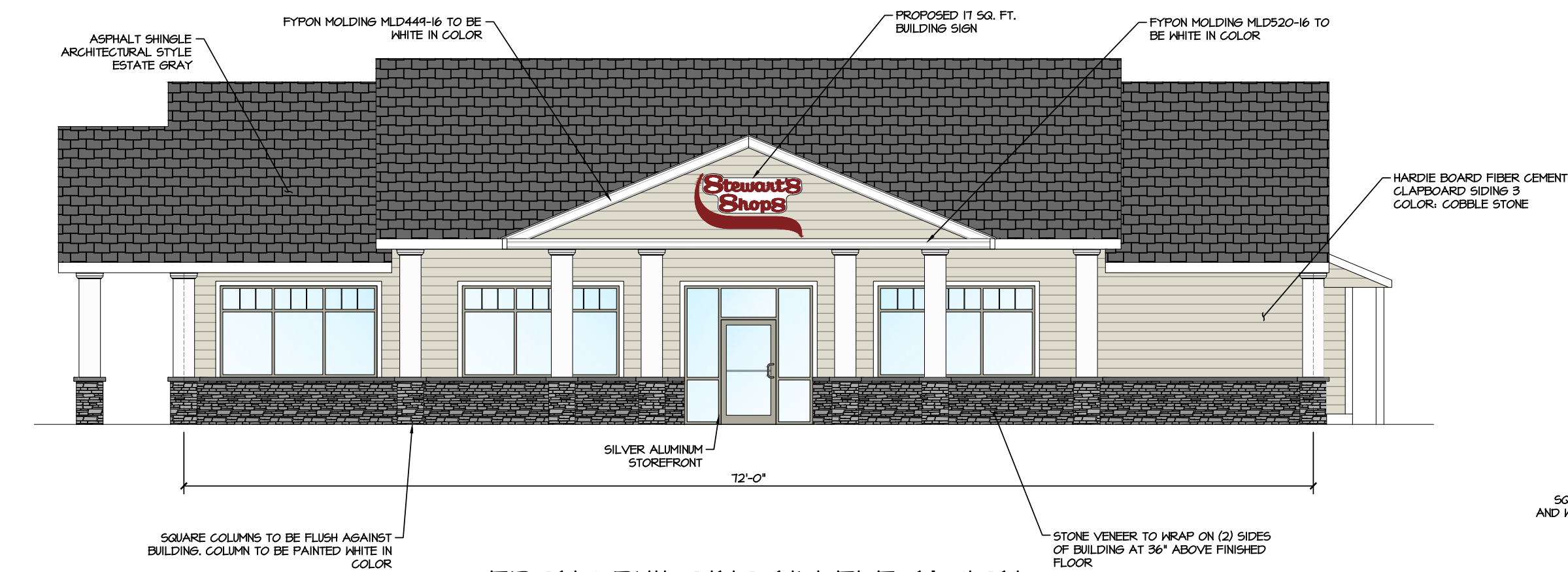


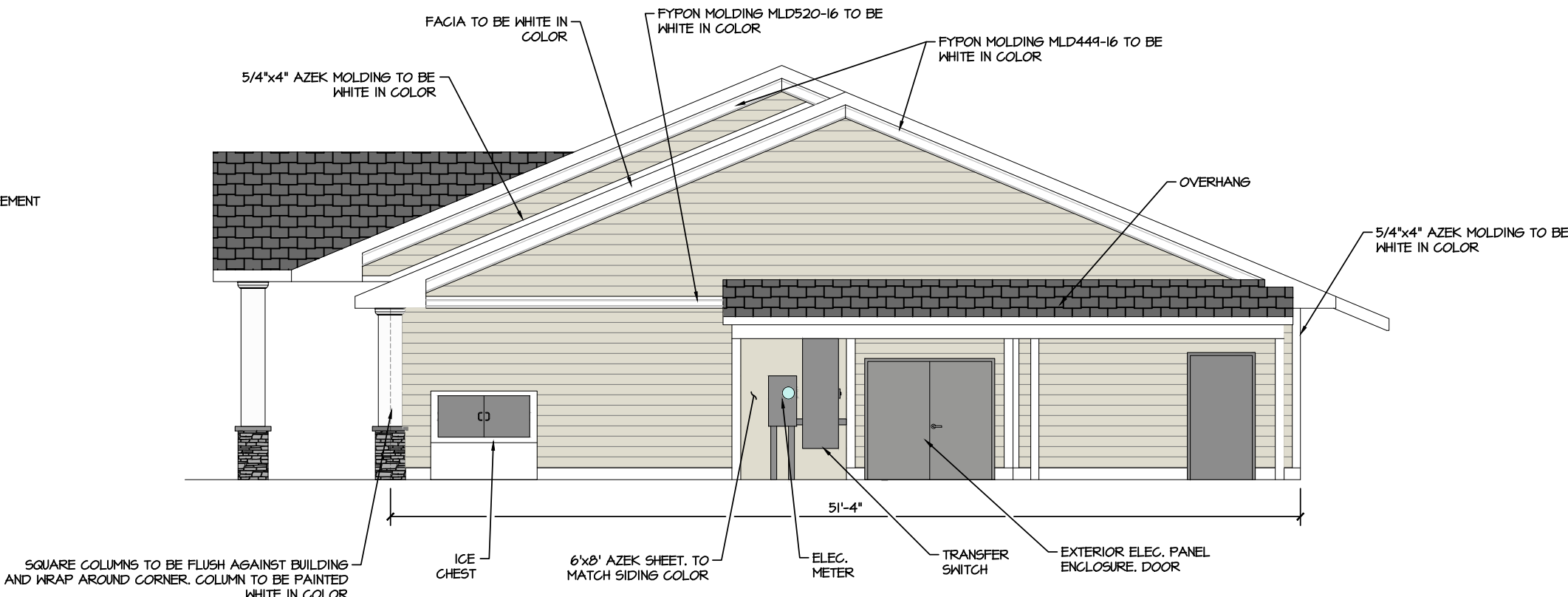
PROPOSED STEWART'S SHOP

3733 US HIGHWAY 9W, HIGHLAND, NY 12528

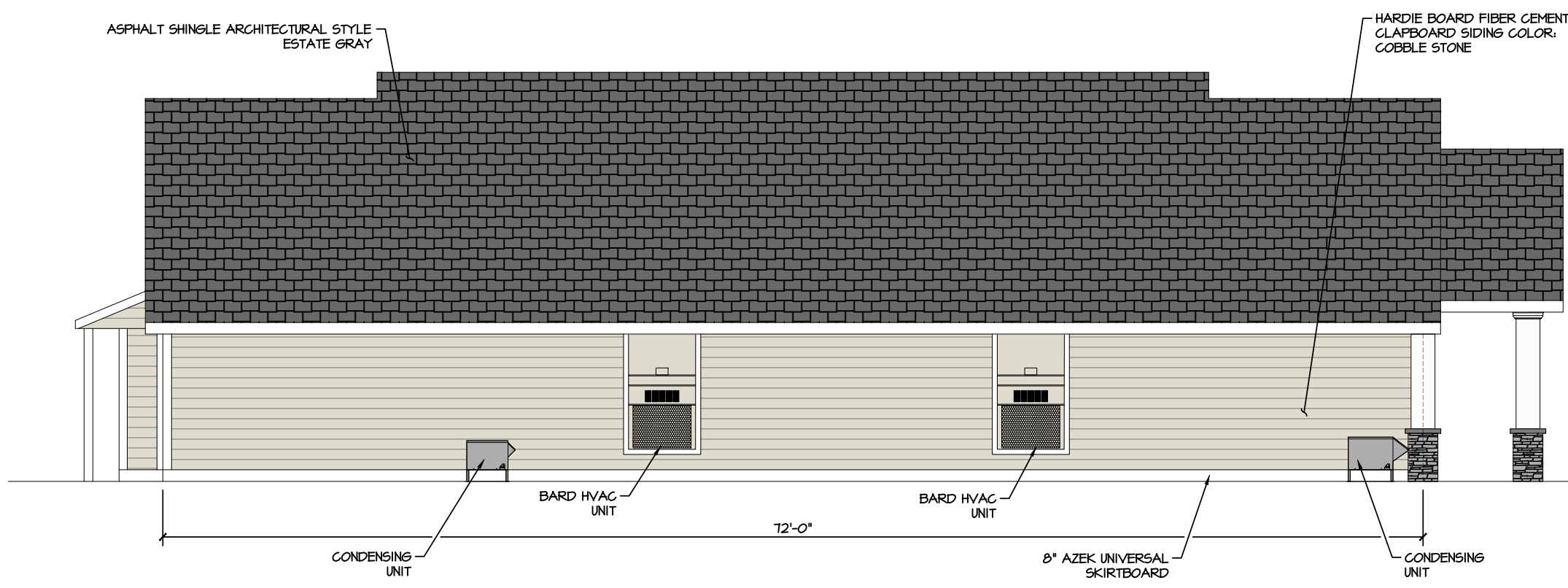
SHEET INDEX		
SH. NO.	DWG. NO.	SHEET TITLE
1	T-1	TITLE SHEET
2	S-1	EXISTING CONDITIONS & DEMO PLAN
3	S-2	PROPOSED SITE PLAN
4	S-3	UTILITY PLAN
5	S-4	GRADING PLAN
6	S-5	STORMWATER MANAGEMENT PLAN
7	S-7	PHOTOMETRIC PLAN
8	S-8	TRUCK ROUTING PLAN



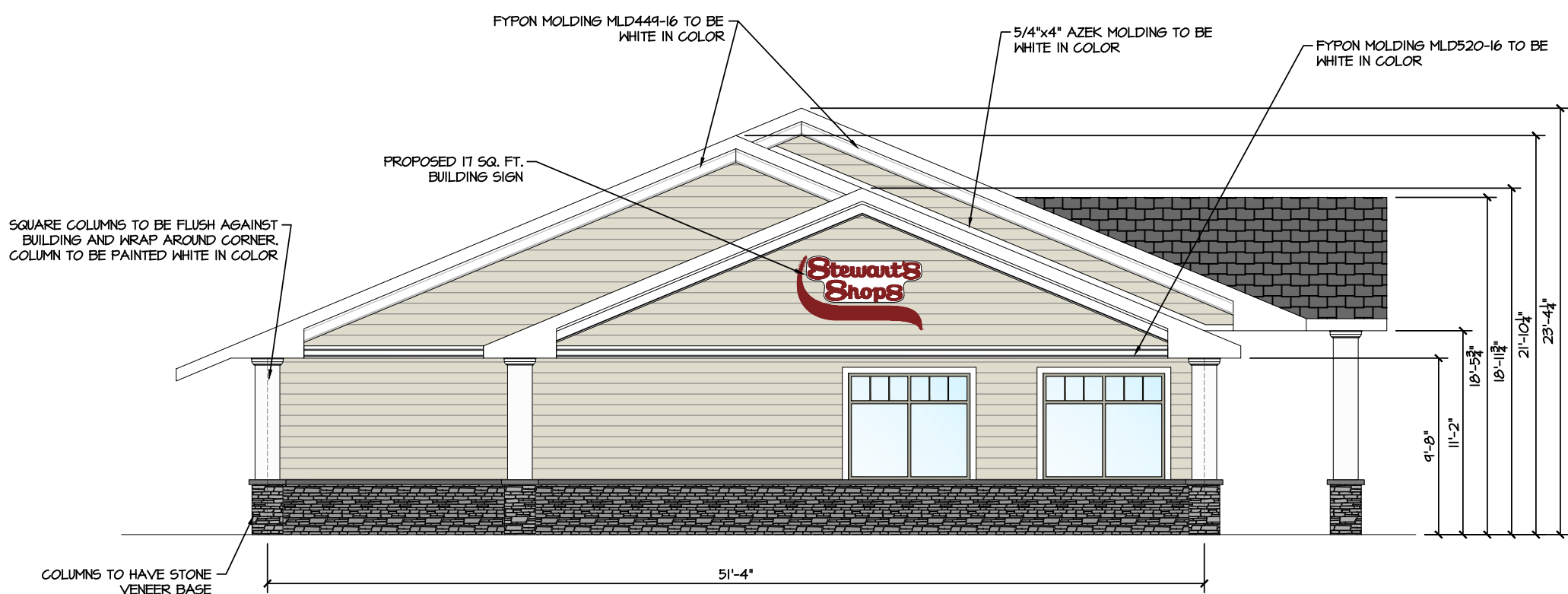
FRONT BUILDING NW ELEVATION



SIDE BUILDING SW ELEVATION



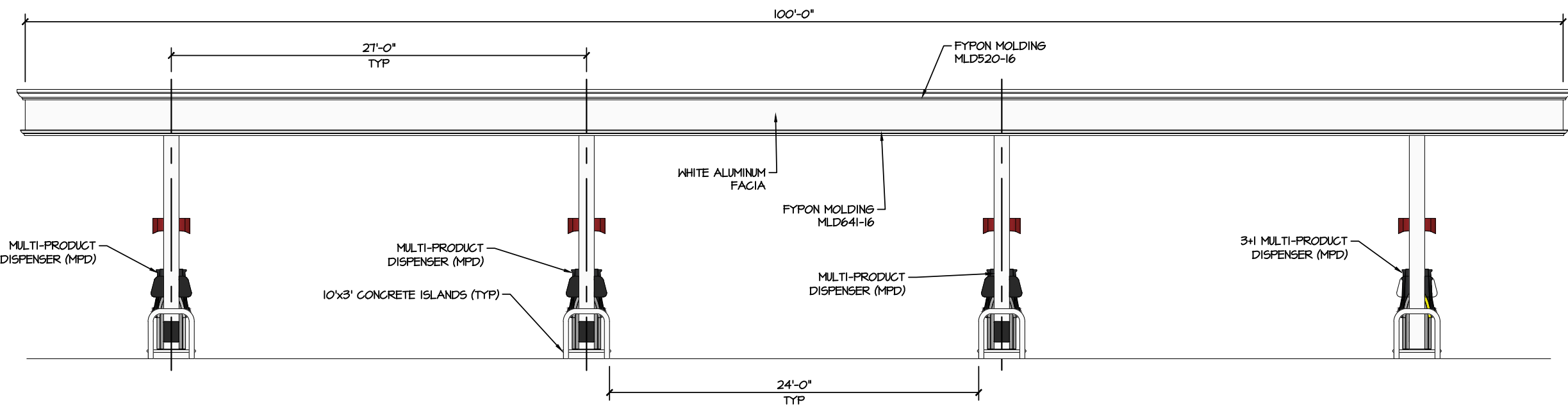
REAR BUILDING SE ELEVATION



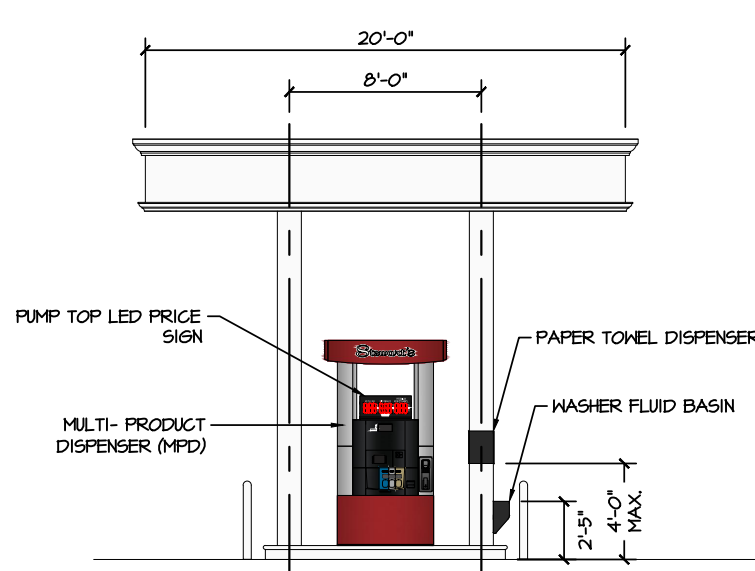
SIDE BUILDING NE ELEVATION



PROPOSED MONUMENT SIGN



GAS CANOPY NW ELEVATION



GAS CANOPY NE ELEVATION



TYPICAL BUILDING SIGN

- SIZE: - 11 SQ. FT.
LETTERS: - 1/8" PLEXIGLASS FACE ON 4-1/2" THICK CAN
ILLUMINATION: - INTERNALLY ILLUMINATED WITH LED LIGHTING
- BURGUNDY LETTERS
- WHITE COLOR BACKGROUND

		STORE NAME, ABBREVIATION & NO.		HIGHLAND - HGLK - 471	
		SITE LOCATION		3733 US HIGHWAY 9W, HIGHLAND, NY 12528	
DATE	NO.	REVISIONS		 SARATOGA SPRINGS, NY 12866 TEL. (518) 581-1200 FAX (518) 581-1201	
10/7/18	6/24/21	UPDATED LAYOUT DUE TO SITE/DELIVERY CHANGE REDUCED PORCH DEPTH, REMOVED SHED			
DRAWN BY: RR		SCALE: NTS		DATE: 9/4/19	
DRAWING NO.		T-1		TITLE: TITLE SHEET	

ALTERATIONS TO THIS DOCUMENT BY OTHER THAN AN AUTHORIZED LICENSED PROFESSIONAL ENGINEER IS ILLEGAL AND A VIOLATION OF THE NEW YORK STATE EDUCATION LAW

LEGEND

PROPERTY LINE	---
FIRE HYDRANT	
WATER VALVE	
GAS VALVE	
SEWER MANHOLE	
SEWER CLEANOUT	
CURB INLET	
CATCH BASIN	
GUY WIRE	
UTILITY POLE	
SIGNPOST	
TRAFFIC SIGNAL CONTROL BOX	
POLE LIGHT	
WELL	
BOLLARD	
IRRIGATION SLEEVE	---IR---
OVERHEAD UTILITIES	---CHK---
WATER SERVICE, 1" TYPE "K" COPPER	---WK---
SEWER SERVICE, 4" SDR 26	---S---
STORM PIPE, PROPOSED, HDPE	---SHP---
STORM PIPE, EXISTING	---SE---
STOCKADE FENCE	---SDF---
CHAINLINK FENCE	---CLF---
SPLITRAIL FENCE	---SLF---
U/G ELECTRICAL/TELE SERVICE	---UE/UT---
U/G ELECTRICAL CONDUIT	---UE---
U/G GAS LINE	---G---
U/G CAMERAL CONDUIT	---CAM---
DIESEL PRODUCT LINE	---DSL---
SUPER PRODUCT LINE	---SUP---
UNLEADED PRODUCT LINE	---UNL---
EXISTING MAJOR CONTOUR	---100---
EXISTING MINOR CONTOUR	---100---
PROPOSED MAJOR CONTOUR	---100---
PROPOSED MINOR CONTOUR	---100---
PROPOSED SPOT ELEVATION	
EXISTING UNCHANGED SPOT ELEVATION	

NOTES:

1. SOME FEATURES IN LEGEND MAY NOT HAVE BEEN USED.
2. DASHED LINES INDICATE NEW WORK.
3. DOTTED LINES INDICATE REMOVED ITEMS.

DEED REFERENCES

Michael Vassallo
to
Philip Fern
Liber 2356, Page 068
Recorded 12/21/1993
Tax Parcel 46.9-1-32.1

Charles Kane III, and Lisa Kane
to
Philip Fern
Instrument 2006-622
Recorded 01/06/2006
Tax Parcel 46.9-1-32.2

Charles Kane III, and Lisa Kane
to
Philip Fern
Instrument 2006-623
Recorded 01/06/2006
Tax Parcel 46.9-1-33.1

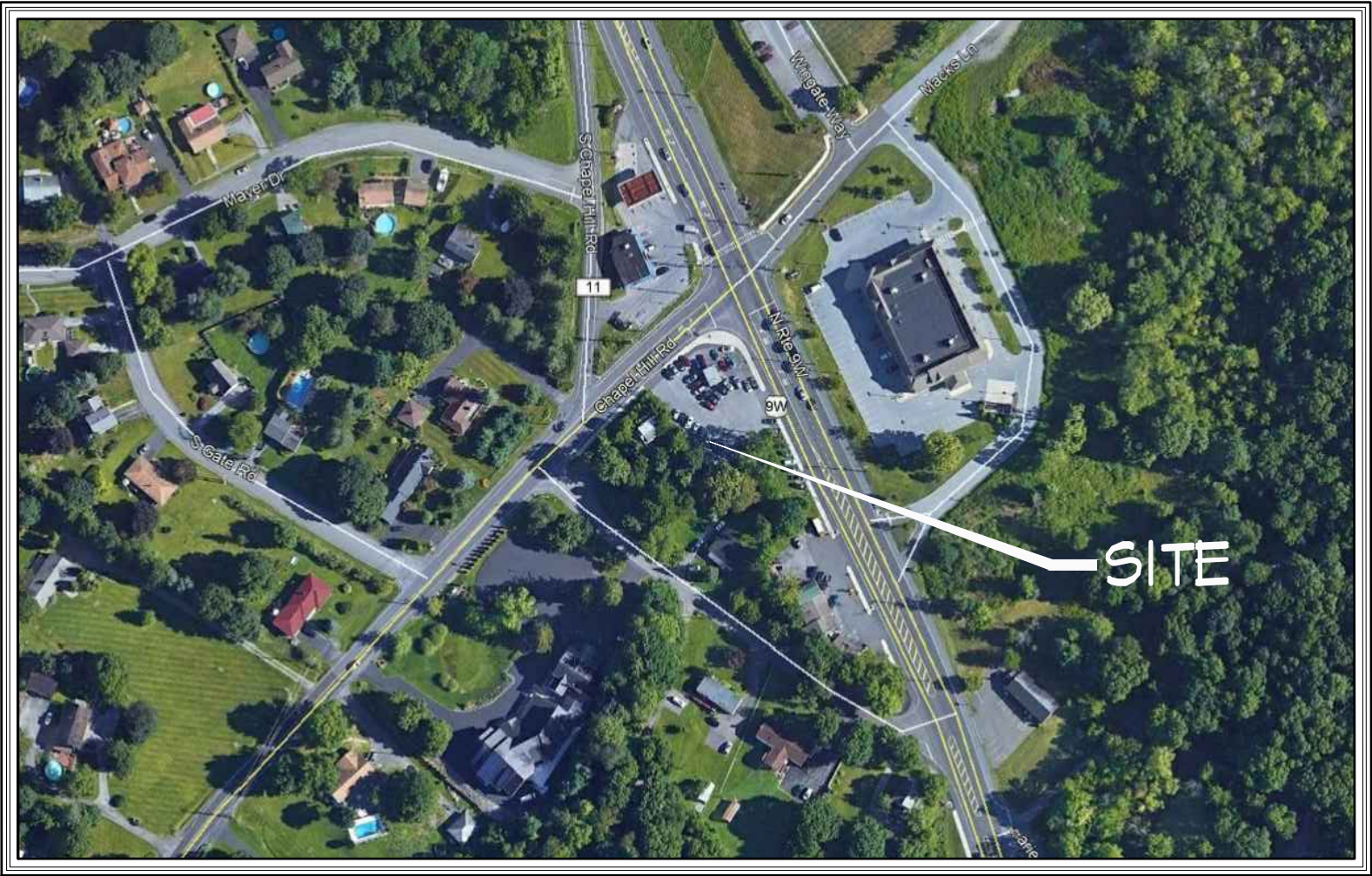
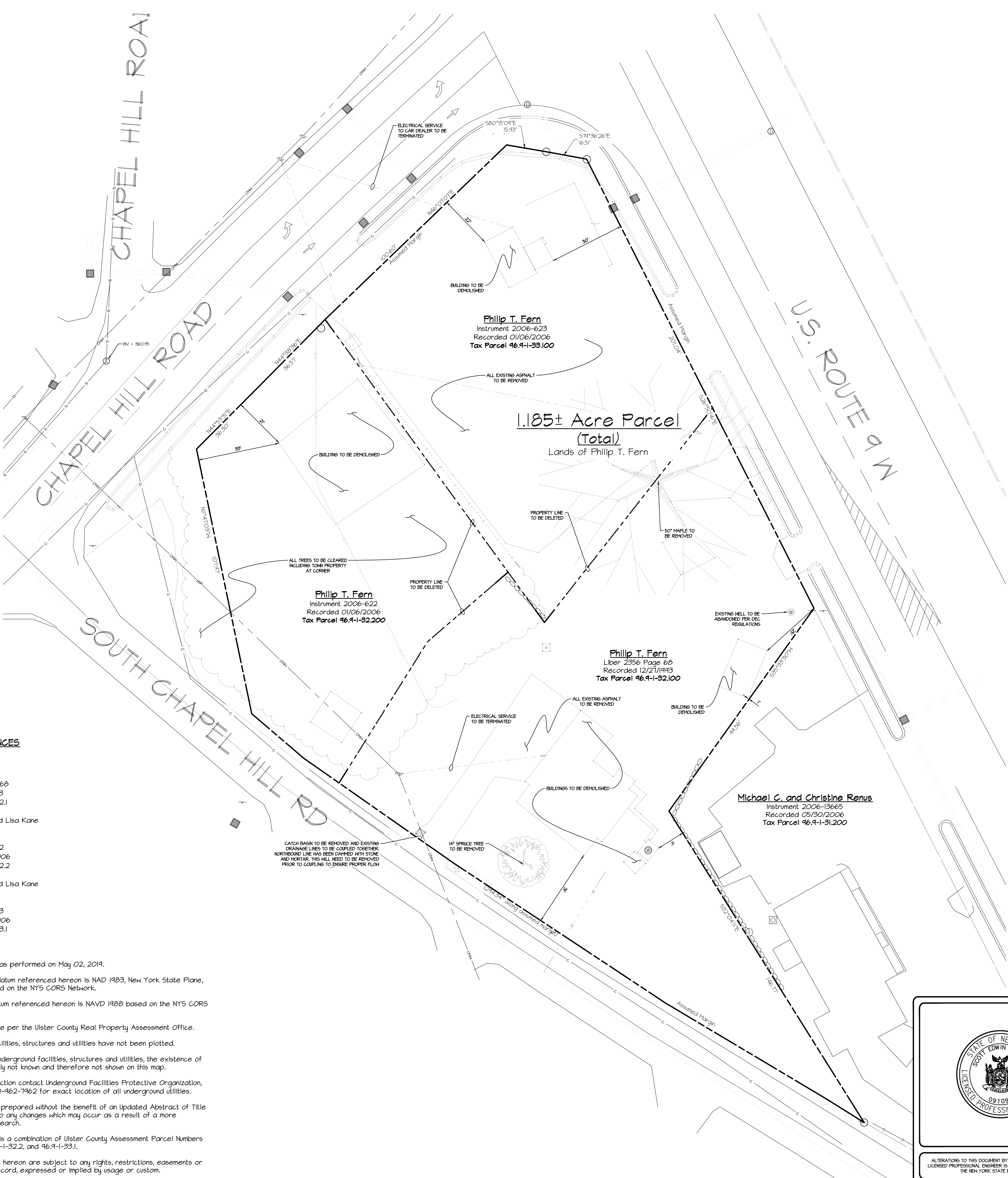
NOTES

- Field location was performed on May 02, 2019.
- The horizontal datum referenced hereon is NAD 1983, New York State Plane, East Zone based on the NYS CORS Network.
- The vertical datum referenced hereon is NAVD 1988 based on the NYS CORS Network.
- All adjoiners are per the Ulster County Real Property Assessment Office.
- Underground facilities, structures and utilities have not been plotted.

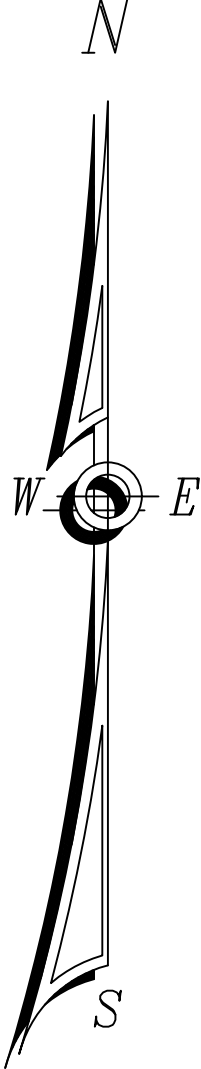
There may be underground facilities, structures and utilities, the existence of which is presently not known and therefore not shown on this map.

Prior to construction contact Underground Facilities Protective Organization, (UFP0) at 1-800-462-7462 for exact location of all underground utilities.

- This survey was prepared without the benefit of an Updated Abstract of Title and is subject to any changes which may occur as a result of a more complete title search.
- Subject parcel is a combination of Ulster County Assessment Parcel Numbers 46.9-1-32.1, 46.9-1-32.2, and 46.9-1-33.1.
- The lands shown hereon are subject to any rights, restrictions, easements or covenants of record, expressed or implied by usage or custom.



SITE VICINITY MAP
SCALE: 1" = 200'



ALTERATIONS TO THIS DOCUMENT BY OTHER THAN AN AUTHORIZED LICENSED PROFESSIONAL ENGINEER IS ILLEGAL AND A VIOLATION OF THE NEW YORK STATE EDUCATION LAW.

STORE NAME, ABBREVIATION & NO.

HIGHLAND - HGLK - 471

SITE LOCATION

3733 US HIGHWAY 9W, HIGHLAND, NY 12528

DATE	NO.	REVISIONS
3/18/21		MORE DETAIL ADDED

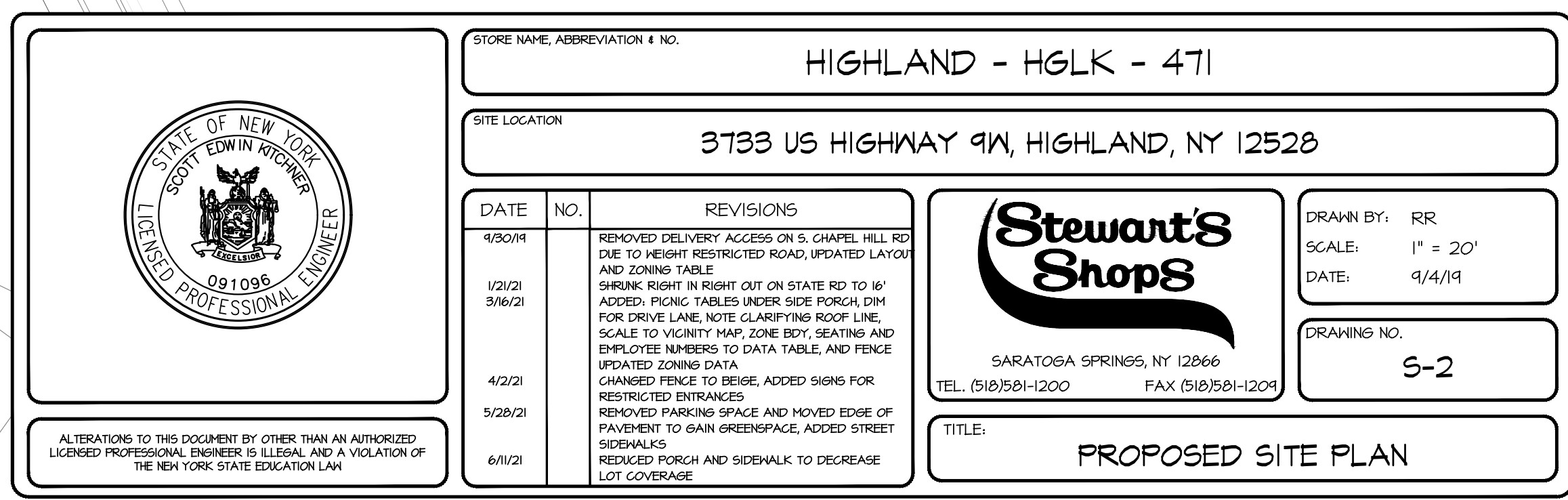
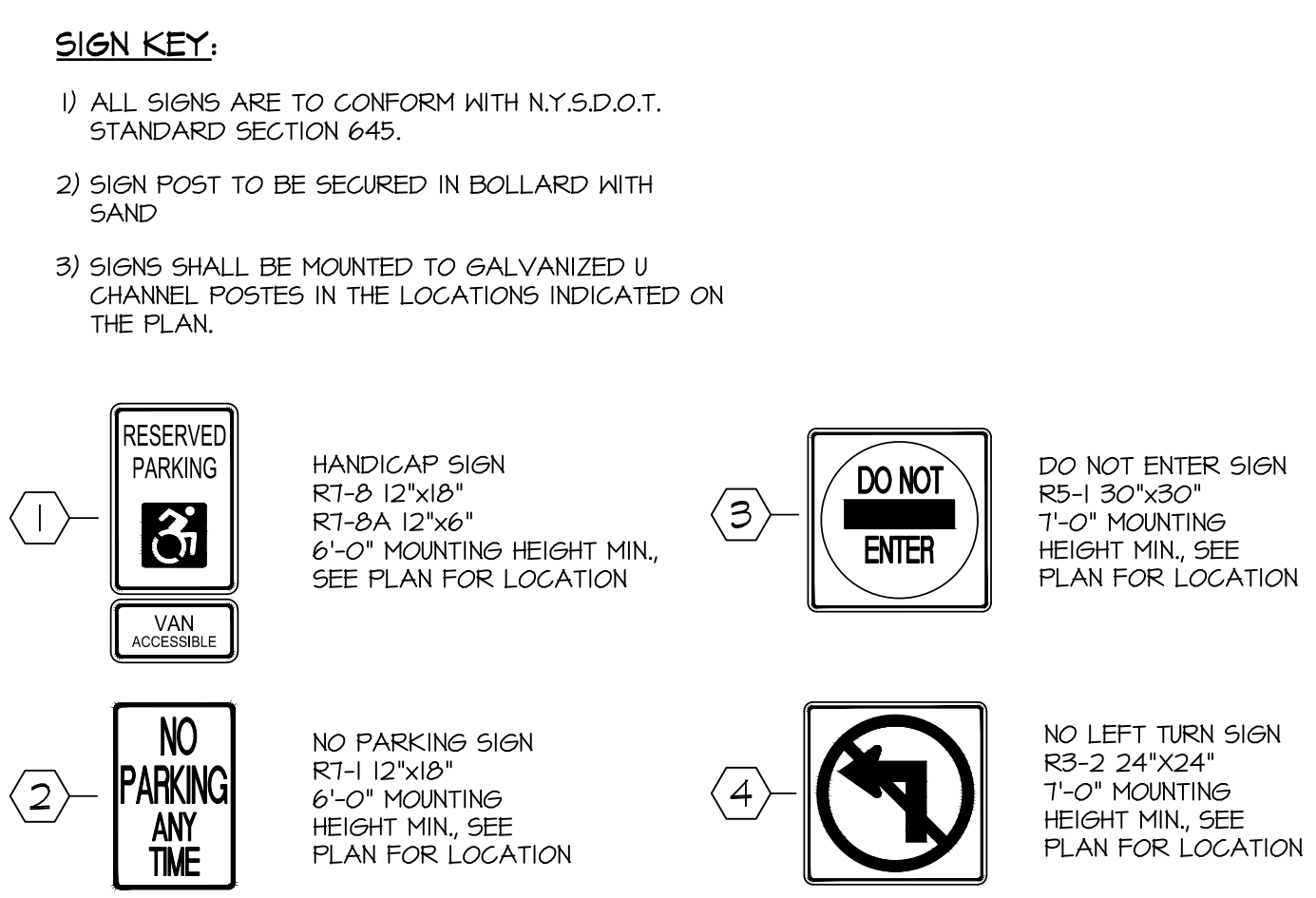
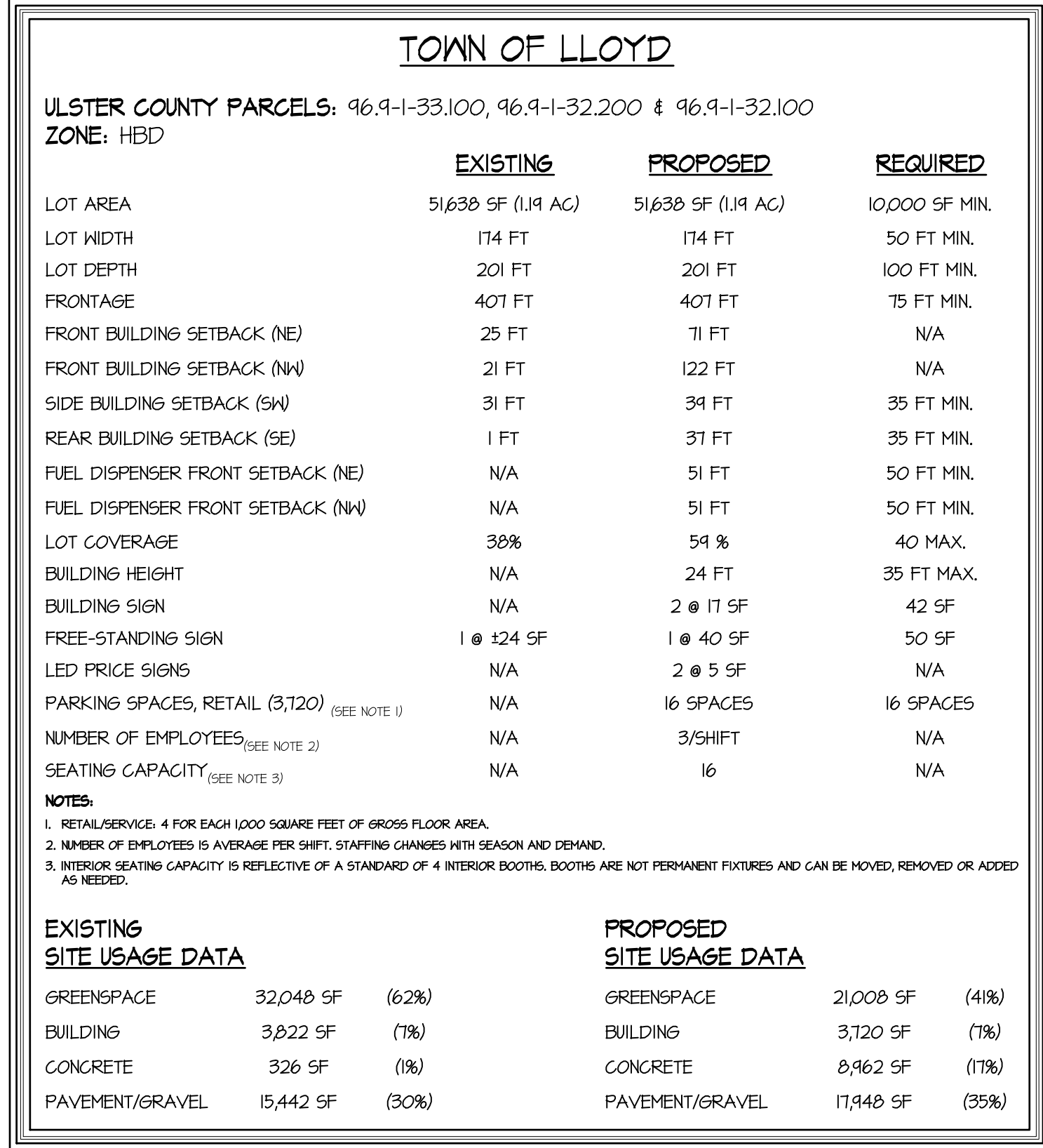
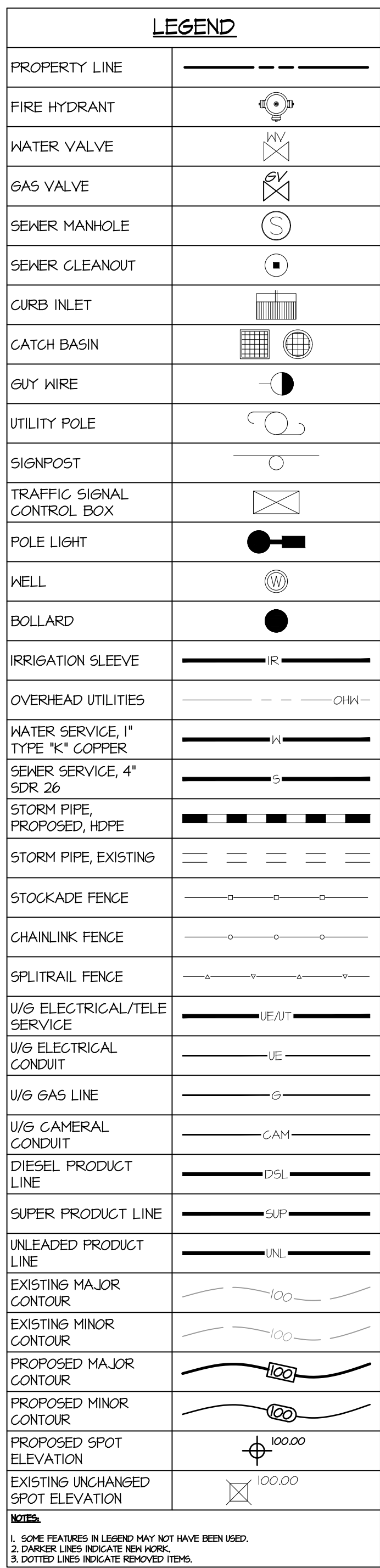
SARATOGA SPRINGS, NY 12866
TEL. (518)581-1200 FAX (518)581-1203

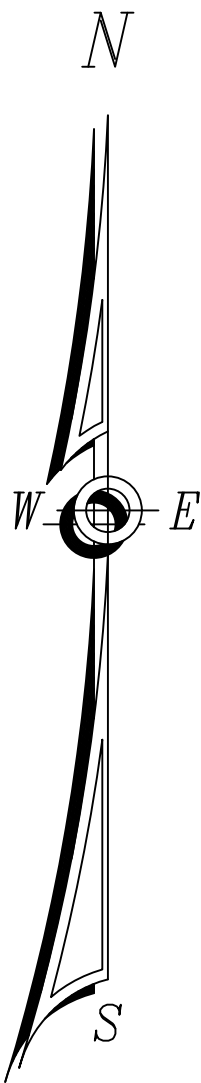
DRAWN BY: RR
SCALE: 1" = 20'
DATE: 9/4/19
DRAWING NO. S-1

TITLE:

EXISTING CONDITIONS & DEMO PLAN

SITE





LEGEND	
PROPERTY LINE	---
FIRE HYDRANT	
WATER VALVE	
GAS VALVE	
SEWER MANHOLE	
SEWER CLEANOUT	
CURB INLET	
CATCH BASIN	
GUY WIRE	
UTILITY POLE	
SIGNPOST	
TRAFFIC SIGNAL CONTROL BOX	
POLE LIGHT	
WELL	
BOLLARD	
IRRIGATION SLEEVE	---IR---
OVERHEAD UTILITIES	---CHK---
WATER SERVICE, 1" TYPE "K" COPPER	---W---
SEWER SERVICE, 4" SDR 26	---S---
STORM PIPE, PROPOSED, HDPE	---STP---
STORM PIPE, EXISTING	---STP---
STOCKADE FENCE	---F---
CHAINLINK FENCE	---F---
SPLITRAIL FENCE	---F---
U/G ELECTRICAL/TELE SERVICE	---UE/UT---
U/G ELECTRICAL CONDUIT	---UE---
U/G GAS LINE	---G---
U/G CAMERAL CONDUIT	---CAM---
DIESEL PRODUCT LINE	---DSL---
SUPER PRODUCT LINE	---SUP---
UNLEADED PRODUCT LINE	---UNL---
EXISTING MAJOR CONTOUR	---100---
EXISTING MINOR CONTOUR	---100---
PROPOSED MAJOR CONTOUR	---100---
PROPOSED MINOR CONTOUR	---100---
PROPOSED SPOT ELEVATION	
EXISTING UNCHANGED SPOT ELEVATION	
NOTES: 1. SOME FEATURES IN LEGEND MAY NOT HAVE BEEN USED. 2. DASHED LINES INDICATE NEW WORK. 3. DOTTED LINES INDICATE REMOVED ITEMS.	



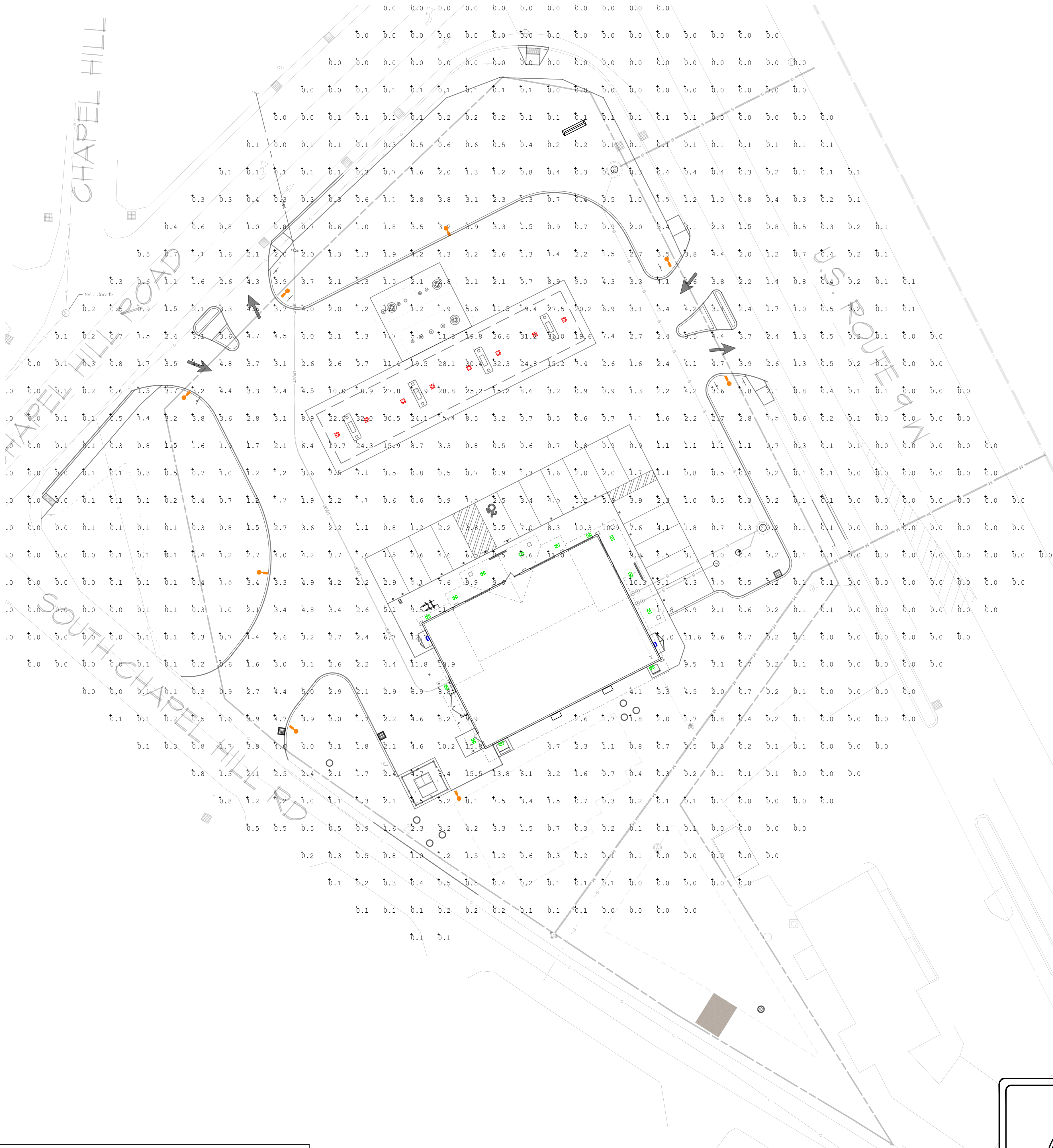
	STORE NAME, ABBREVIATION & NO.		HIGHLAND - HGLK - 471	
	SITE LOCATION			
	3733 US HIGHWAY 9W, HIGHLAND, NY 12528			
	DATE	NO.	REVISIONS	
		SARATOGA SPRINGS, NY 12866 TEL. (518) 581-1200 FAX (518) 581-1201		
		TITLE: GRADING PLAN		



LEGEND	
PROPERTY LINE	---
FIRE HYDRANT	
WATER VALVE	
GAS VALVE	
SEWER MANHOLE	
SEWER CLEANOUT	
CURB INLET	
CATCH BASIN	
GUY WIRE	
UTILITY POLE	
SIGNPOST	
TRAFFIC SIGNAL CONTROL BOX	
POLE LIGHT	
WELL	
BOLLARD	
IRRIGATION SLEEVE	---IR---
OVERHEAD UTILITIES	---CHK---
WATER SERVICE, 1" TYPE "K" COPPER	---W---
SEWER SERVICE, 4" SDR 26	---S---
STORM PIPE, PROPOSED, HDPE	---STP---
STORM PIPE, EXISTING	---STP---
STOCKADE FENCE	---SFK---
CHAINLINK FENCE	---CLF---
SPLITRAIL FENCE	---SLF---
U/G ELECTRICAL/TELE SERVICE	---UE/UT---
U/G ELECTRICAL CONDUIT	---UE---
U/G GAS LINE	---G---
U/G CAMERAL CONDUIT	---CAM---
DIESEL PRODUCT LINE	---DSL---
SUPER PRODUCT LINE	---SUP---
UNLEADED PRODUCT LINE	---UNL---
EXISTING MAJOR CONTOUR	---100---
EXISTING MINOR CONTOUR	---100---
PROPOSED MAJOR CONTOUR	---100---
PROPOSED MINOR CONTOUR	---100---
PROPOSED SPOT ELEVATION	
EXISTING UNCHANGED SPOT ELEVATION	
NOTES: 1. SOME FEATURES IN LEGEND MAY NOT HAVE BEEN USED. 2. DASHED LINES INDICATE NEW WORK. 3. DOTTED LINES INDICATE REMOVED ITEMS.	



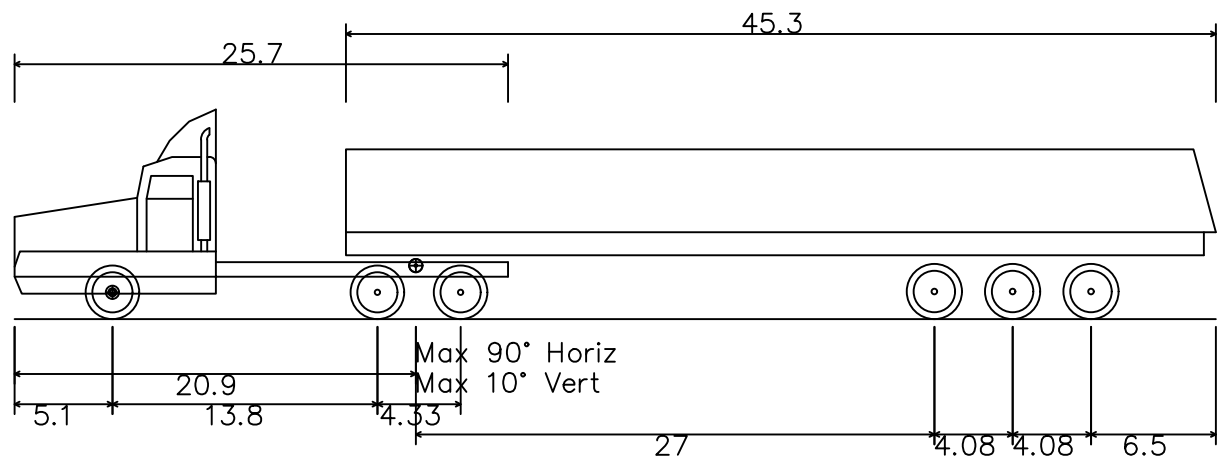
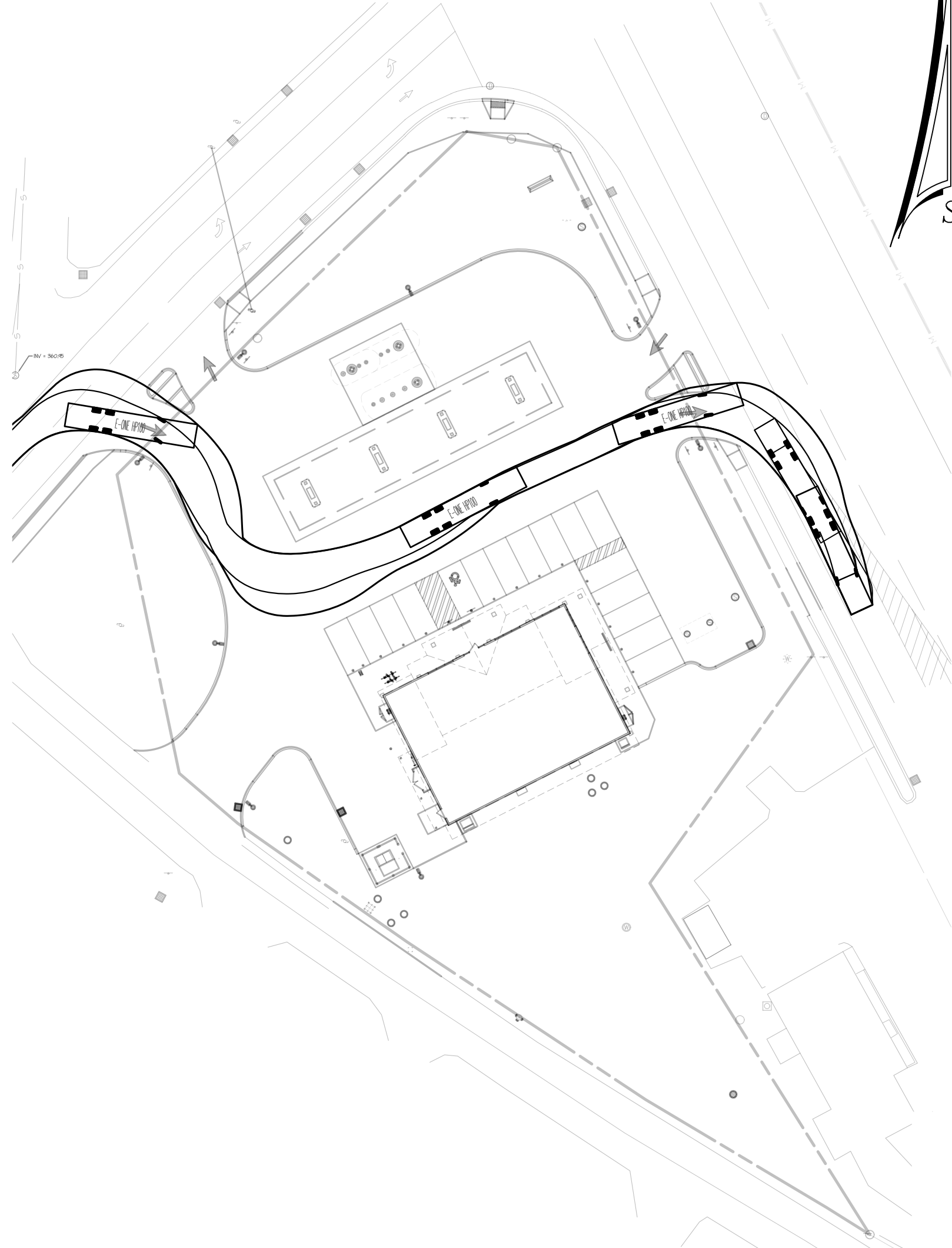
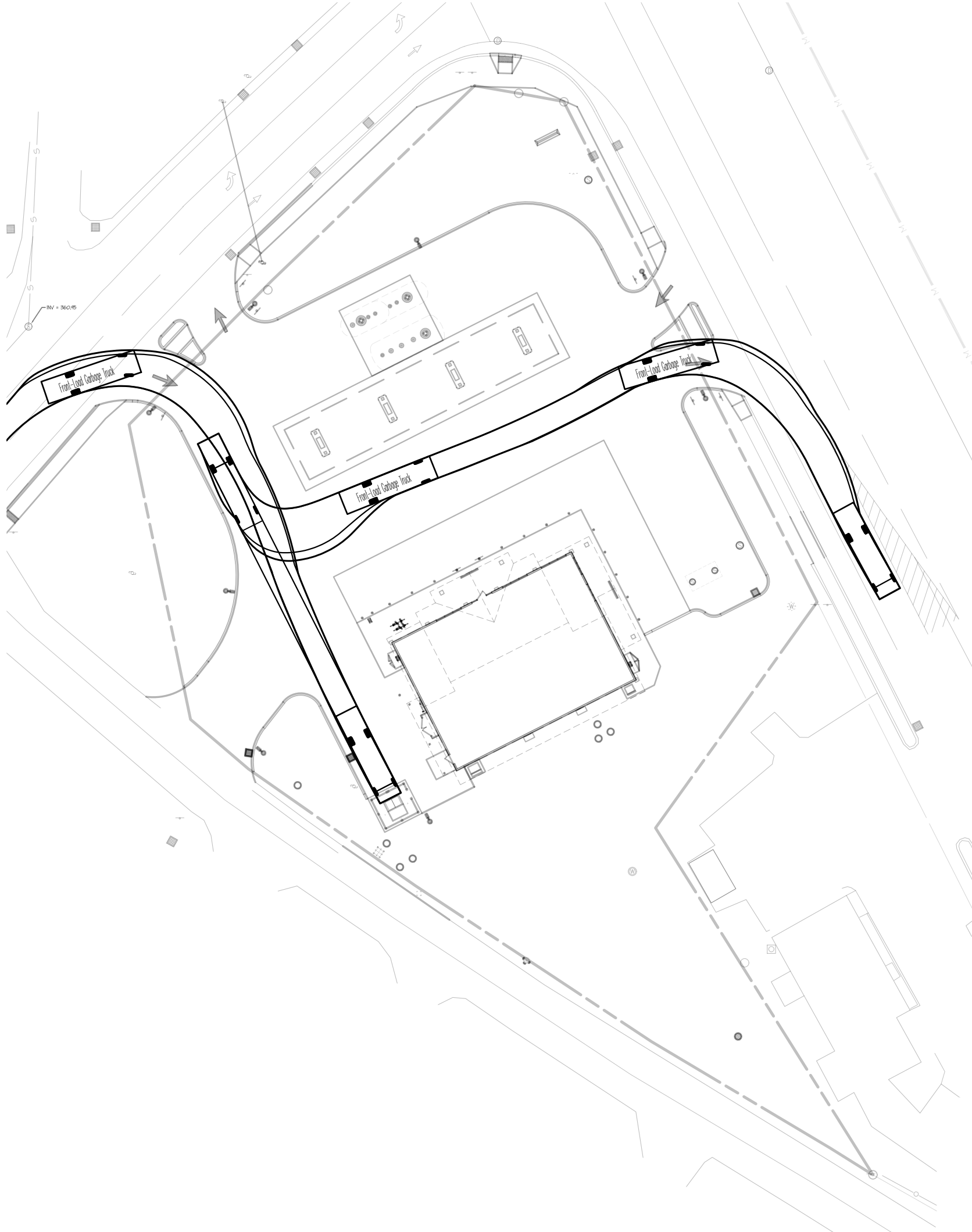
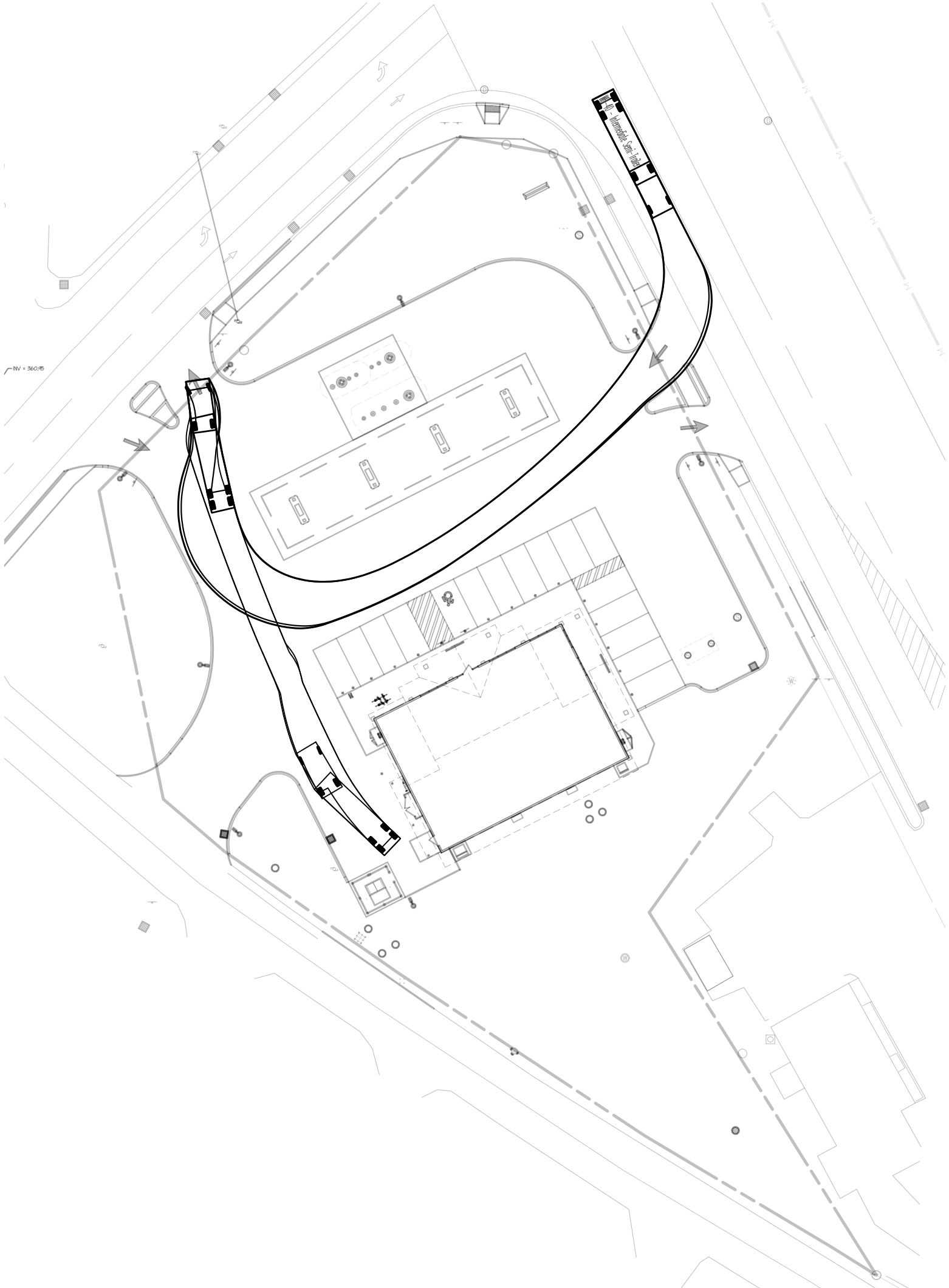
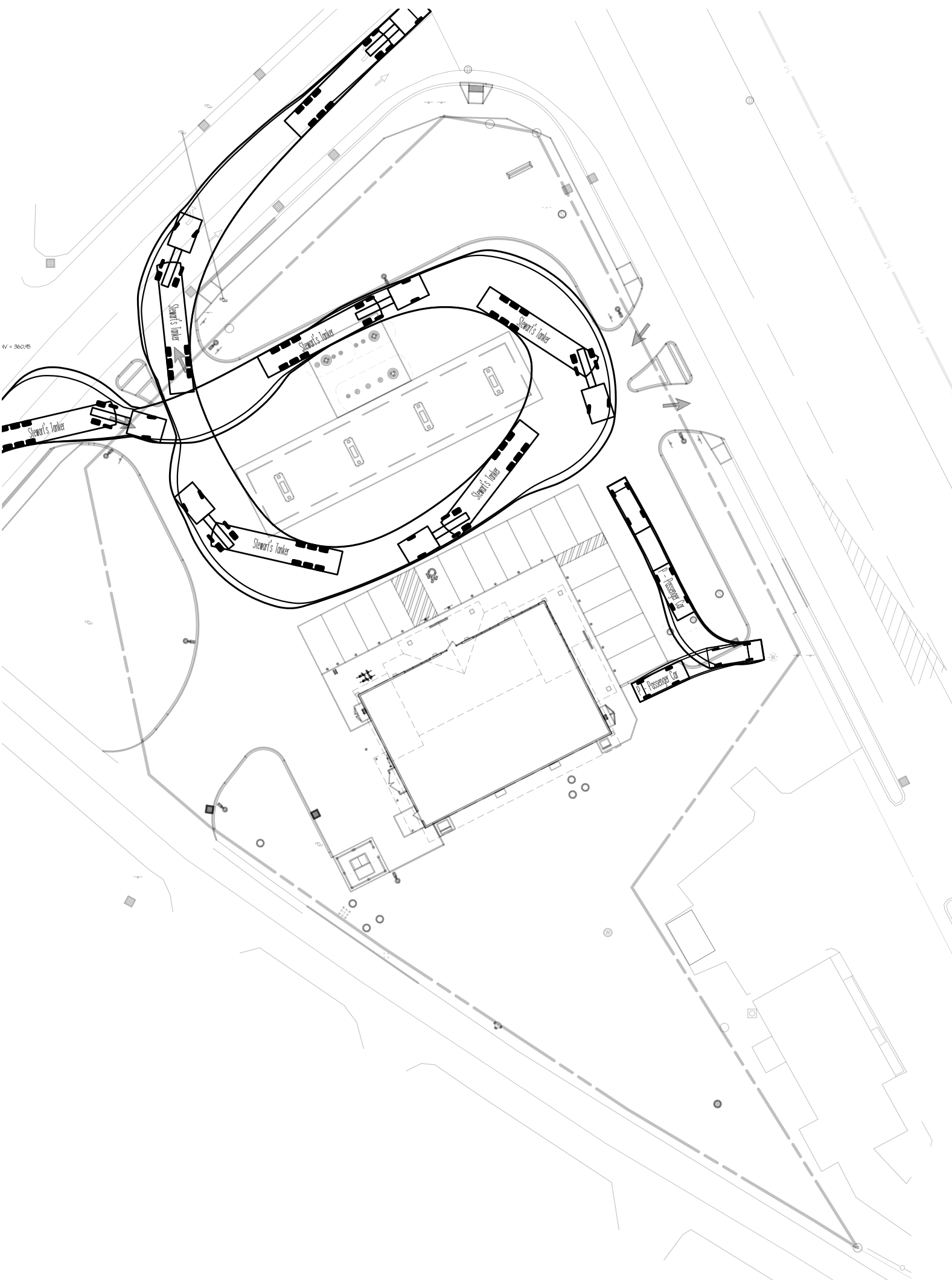
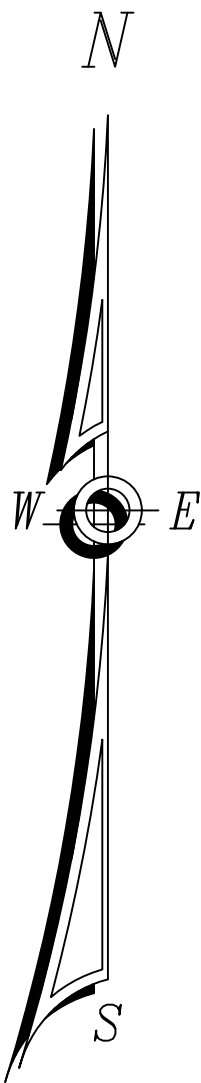
	STORE NAME, ABBREVIATION & NO.		HIGHLAND - HGLK - 471	
	SITE LOCATION			
	3733 US HIGHWAY 9W, HIGHLAND, NY 12528			
	DATE	NO.	REVISIONS	
		SARATOGA SPRINGS, NY 12866 TEL. (518) 581-1200 FAX (518) 581-1209		
		TITLE: STORMWATER MANAGEMENT PLAN		



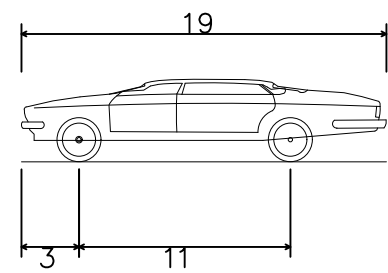
LUMINAIRE SCHEDULE							
SYMBOL	QTY	LABEL	ARRANGEMENT	DESCRIPTION	LUM. WATTS	LUM. LUMENS	COMMENTS
	8	ARE-ED6-3M-DA-06-E-UL-BZ-100	SINGLE	POLE LIGHT, 60 WHITE LED, 100mA DRIVER, DIRECT ARM MOUNT	136.3	8146	
	8	CAN-304-PS-RS-06-E-UL-WH-525	SINGLE	CANOPY LIGHT, 60 WHITE LED, 525mA DRIVER, RECESSED MOUNT	100	10862	
	3	SEC-ED6-3M-WH-04-E-UL-WH-525	SINGLE	SECURITY LIGHT, 40 WHITE LED, 525mA DRIVER, WALL MOUNTED	60	5614	
	13	SFT-228-3M-RM-03-E-UL-WH-525	SINGLE	SOFFIT LIGHT, 30 WHITE LED, 525mA DRIVER, RECESSED MOUNT	54	4436	

CALCULATION SUMMARY					
LABEL	CALC. TYPE	UNITS	AVG	MAX	MIN
EXTENTS OF LIGHT	ILLUMINANCE	FC	2.24	32.1	0.0
CANOPY	ILLUMINANCE	FC	24.23	32.1	15.2
PARKING	ILLUMINANCE	FC	3.10	15.5	0.1
SIDEWALKS	ILLUMINANCE	FC	10.16	15.2	5.3

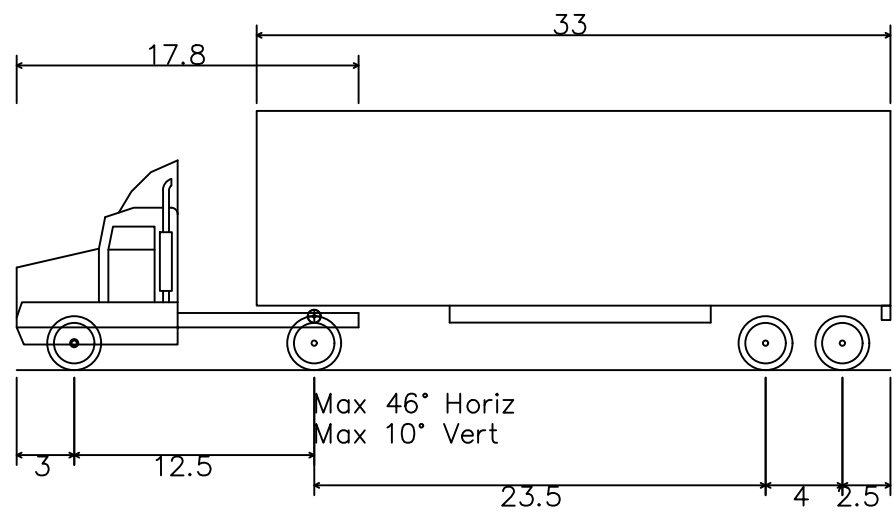
	STORE NAME, ABBREVIATION & NO.		HIGHLAND - HGLK - 471	
	SITE LOCATION			
	3733 US HIGHWAY 9W, HIGHLAND, NY 12528			
	DATE	NO.	REVISIONS	
		SARATOGA SPRINGS, NY 12866 TEL. (518) 581-1200 FAX (518) 581-1201		
		TITLE: PHOTOMETRIC PLAN		
ALTERATIONS TO THIS DOCUMENT BY OTHER THAN AN AUTHORIZED LICENSED PROFESSIONAL ENGINEER IS ILLEGAL AND A VIOLATION OF THE NEW YORK STATE EDUCATION LAW.		DRAWN BY: RR SCALE: 1" = 20' DATE: 9/4/19		
		DRAWING NO. S-7		



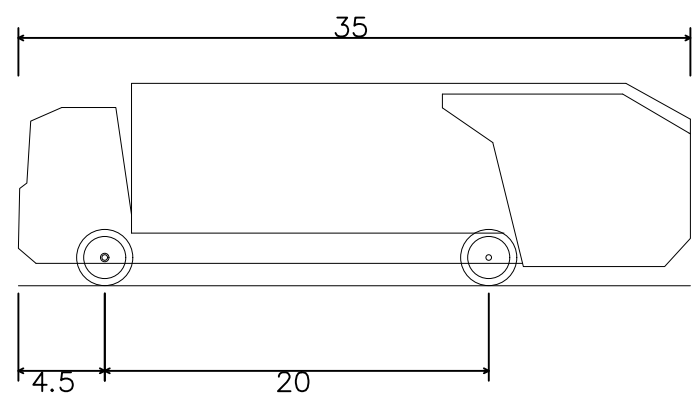
Stewart's Tanker
Overall Length 62.559ft
Overall Width 8.202ft
Overall Body Height 10.920ft
Min Body Ground Clearance 1.329ft
Max Track Width 8.202ft
Lock-to-lock time 4.00s
Curb to Curb Turning Radius 31.650ft



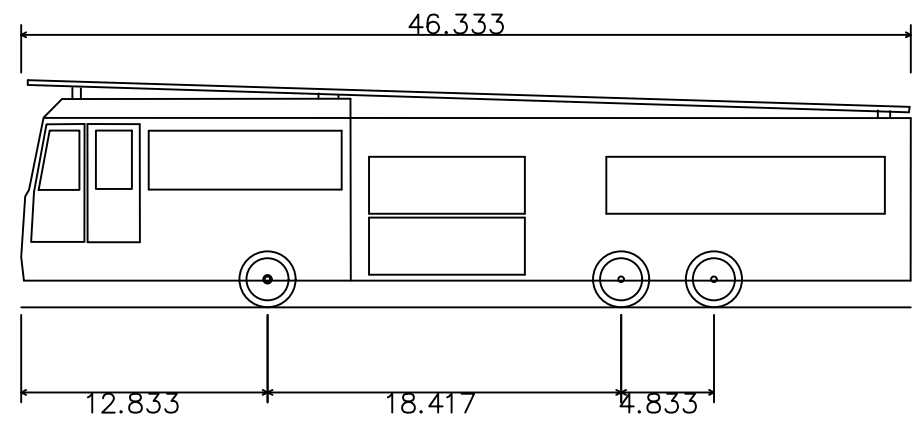
P - Passenger Car
Overall Length 19.000ft
Overall Width 7.000ft
Overall Body Height 4.300ft
Min Body Ground Clearance 1.115ft
Track Width 6.000ft
Lock-to-lock time 4.00s
Max Steering Angle (Virtual) 31.60°



WB-40 - Intermediate Semi-Trailer
Overall Length 45.499ft
Overall Width 8.000ft
Overall Body Height 13.500ft
Min Body Ground Clearance 1.334ft
Track Width 8.000ft
Lock-to-lock time 4.00s
Max Steering Angle (Virtual) 20.30°



Front-Load Garbage Truck
Overall Length 35.000ft
Overall Width 8.375ft
Overall Body Height 10.546ft
Min Body Ground Clearance 1.000ft
Track Width 8.375ft
Lock-to-lock time 6.00s
Curb to Curb Turning Radius 29.300ft



E-ONE HP100
Overall Length 46.333ft
Overall Width 8.333ft
Overall Body Height 11.833ft
Min Body Ground Clearance 1.393ft
Track Width 8.333ft
Lock-to-lock time 6.00s
Curb to Curb Turning Radius 38.250ft

		STORE NAME, ABBREVIATION & NO.		HIGHLAND - HGLK - 471	
		SITE LOCATION		3733 US HIGHWAY 9W, HIGHLAND, NY 12528	
DATE	NO.	REVISIONS			
2/29/21		UPDATED FIRE TRUCK TO CLOSER MATCH TOWNS			
				DRAWN BY: RR SCALE: 1" = 20' DATE: 9/4/19	
				DRAWING NO. S-8	
				TITLE: TRUCK ROUTING PLAN	

ALTERATIONS TO THIS DOCUMENT BY OTHER THAN AN AUTHORIZED LICENSED PROFESSIONAL ENGINEER IS ILLEGAL AND A VIOLATION OF THE NEW YORK STATE EDUCATION LAW.